

Panorama NovaView 6.2 Installation Guide

For the remainder of the document any reference to NovaView 6 will be taken to infer NovaView 6.2 and the NovaView version will be known as 6.2.3.

We know that time makes all the difference in BI and in the rest of the business world, so we want to save you time by making this installation as quick and easy as possible.

This document explains the Panorama NovaView 6 installation procedure in three steps:

- Installation prerequisites
- NovaView 6 products setup
- Post-installation tasks

Thank you very much for using Panorama NovaView 6, if you need our help please e-mail support@panorama.com or reference <http://tech.panorama.com>

Table of Contents

Chapter 1. Panorama NovaView 6 Installation Prerequisites	5
Optional Components	7
Chapter 2. Panorama NovaView 6 Installation	8
Chapter 3. Panorama NovaView 6 Post-Installation	16
Settings Verifications	17
Troubleshooting.....	20
Useful KB Links for further configurations	21

1

Chapter 1. Panorama NovaView 6 Installation Prerequisites

This chapter describes the NovaView 6 installation prerequisites.

NovaView 6 is designed to run as a server system on Windows® 2003, 2003 R2, 2008 and 2008 R2 servers.

IMPORTANT: If you are upgrading your installation, the Panorama database and Panorama Dashboard database will automatically be upgraded, please backup your databases and your Dashboard folder(s) PRIOR to installation of NovaView 6.

Before installing NovaView 6 on your server machine you should first install:

- Microsoft .NET Framework 2.0 (Version 2.0.50727 or newer)
- Microsoft Visual J# Version 2
- IIS 6 or 7
- Microsoft Core XML Services (MSXML) 6.0 (Version 4 in Windows 2008)

NovaView 6 is compatible with the following:

- Excel 2003/2007
- SSAS (connecting from UDC) 2000/2005/2008
- SSAS (used as the engine for cube services) 2005/2008
- SQL (connecting from UDC) 2000/2005/2008
- SQL (used for repository/cube services) 2005/2008

For the NovaView server machine to connect with these servers (if not installed on the same machine) you will need to load the following:

- Microsoft SQL Native Client (Included on your Microsoft SQL Installation CD)
- Microsoft SQL Client Components (Included in the Microsoft SQL Installation CD)
- Microsoft 2000 SQL/OLAP ADOMD.NET 8.0
- Microsoft 2005 SQL/OLAP ADOMD.NET 9.0

- Microsoft 2008 SQL/OLAP ADOMD.NET 10.0

Windows 2008 Server specific requirement is to disable Data Execution Protection.

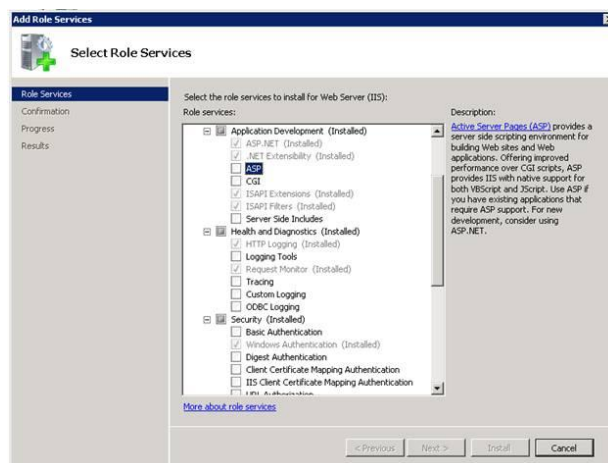
1. Click **Start**
2. Click **All Programs**
3. Right click on the **Command Prompt** and choose **Run As Administrator**
4. Click on **Allow** if your permission is requested
5. Type the following in to the command prompt:

```
Bcdedit.exe /set {current} nx AlwaysOff
```

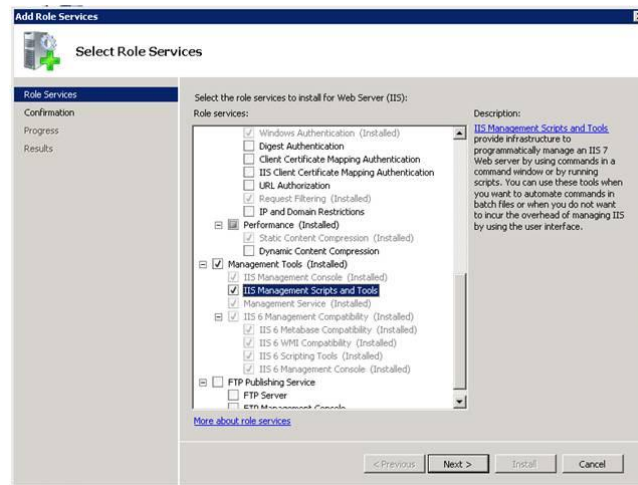
6. Hit **Enter** and you should get the confirmation: **Operation Completed Successfully**
7. Now you must **REBOOT** the system, then DEP will be switched off

Windows 2008 ASP, CGI and IIS

1. Open the Manage Server window
2. Select Roles and Add Role Services
3. Put a check next to 'ASP' and 'CGI'



4. Check 'IIS Management Scripts and Tools' then click next to Install



5. For further Server\Client side prerequisites please look at the following article <http://tech.panorama.com/index.php/kb/1-installation-progress/396-installation>

Optional Components

- Adobe Flash Version 10 and above to support Flash analytics in the web and Dashboard interfaces.
- Microsoft Java Virtual Machine (Unsupported by Microsoft from December 2007).
- SharePoint 2007 SP2 or SharePoint 2010 to run with NovaView WebParts

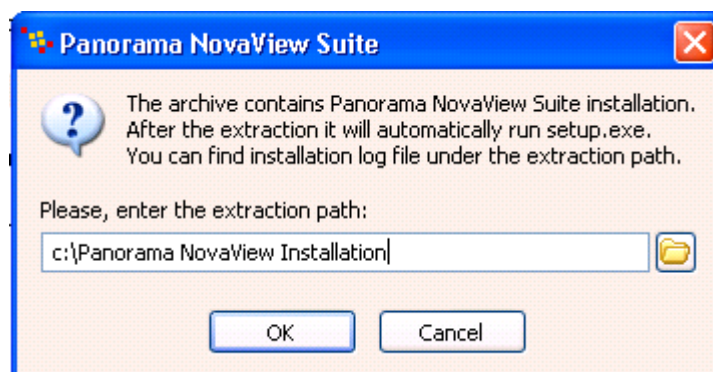
Chapter 2. Panorama NovaView 6 Installation

This chapter describes the NovaView 6 installation procedure.

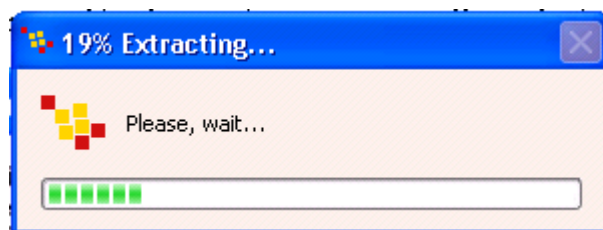
Welcome to the initial step of the new NovaView 6 installation.

NovaView will require a reboot of the machine and if the Windows 4.5 Installer is not previously installed we require a second reboot of the machine, please take this into consideration before beginning the installation.

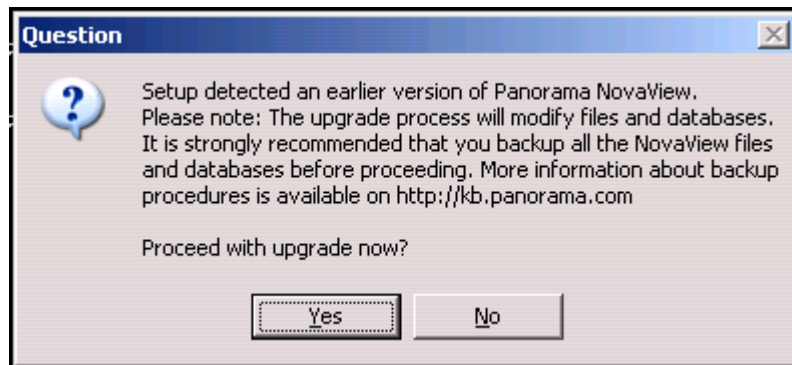
The first step is to choose the extraction path for the setup (.msi) file and any setup log files that are created for later reference; you will see the following prompt.



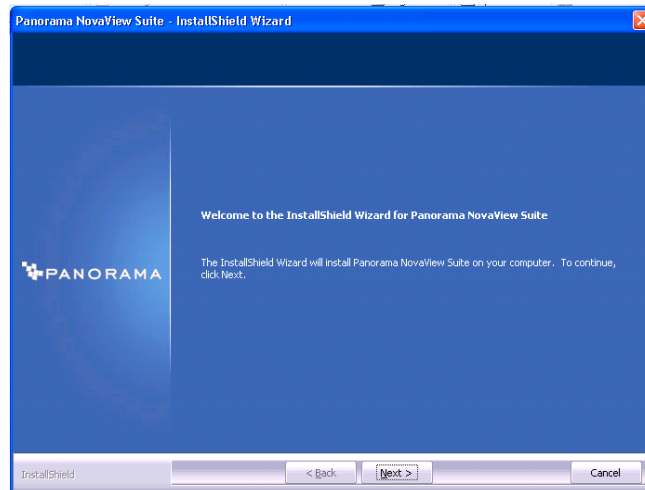
This is followed by the extraction process after choosing the paths location.



If you are upgrading a current system you will receive the following prompt.



After which, or, if you are not running an upgrade then, the first screen introduces the InstallShield wizard which will guide you through the setup process.



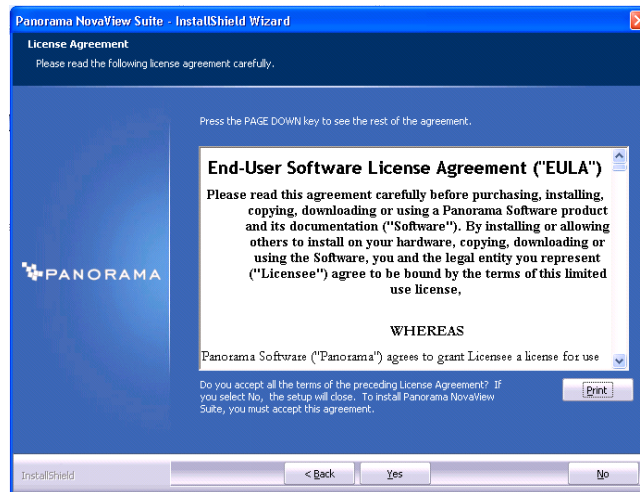
To start the installation:

Click **Next**.

To proceed with the installation you must now agree with the licensing of the Panorama Software. Please read the license terms and then click **Yes** or **No**.

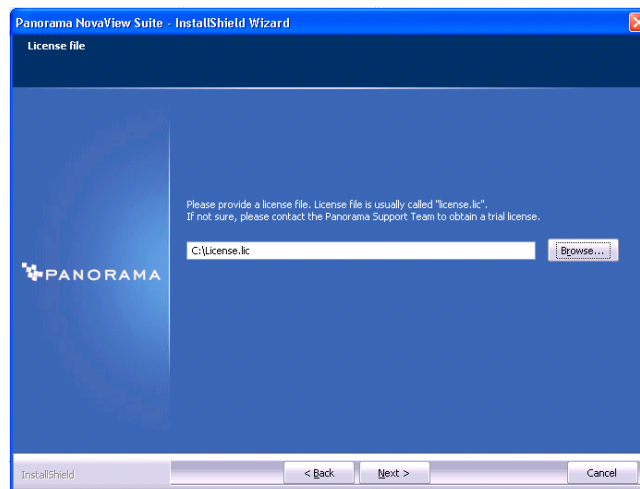
If you choose **Yes** then the installation will move on to the next step.

If you choose **No** at this point the installation will stop gracefully and no changes will be made to your machine.



You are asked to provide the location of the license file provided by our Support team with the trial version of the software, or with the full purchase of NovaView.

Please browse to the location of the license.lic file so that the installation can assess which NovaView components you are licensed to install from the NovaView Suite.



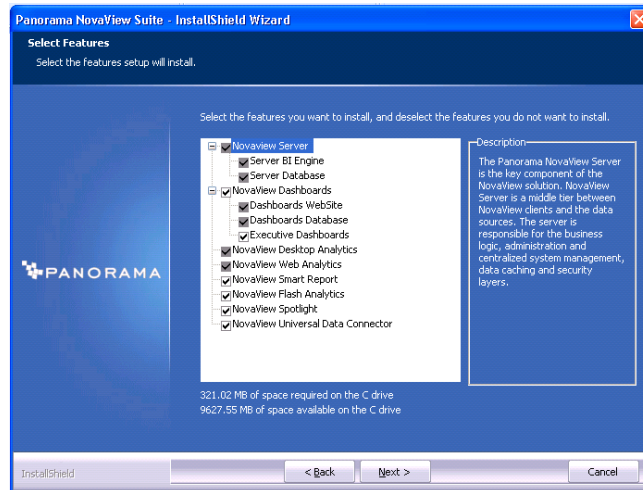
Please choose to install all components that are checked by default.

NOTE: The products offered in this step will reflect the license you have purchased from Panorama.

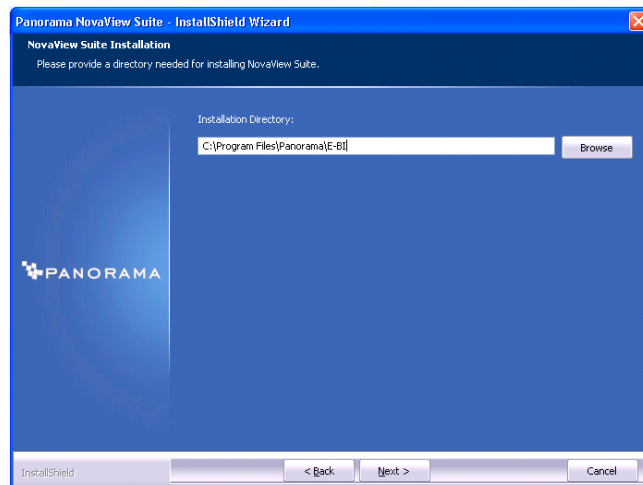
NOTE: If you wish to install the Desktop Client only on a client machine please uncheck the following options in this order (a copy of your NovaView license is required on the client machine):

- NovaView Universal Data Connector, NovaView Spotlight, NovaView Flash Analytics, NovaView Smart Report.
- NovaView Dashboards, Executive Dashboards, Dashboards Website,

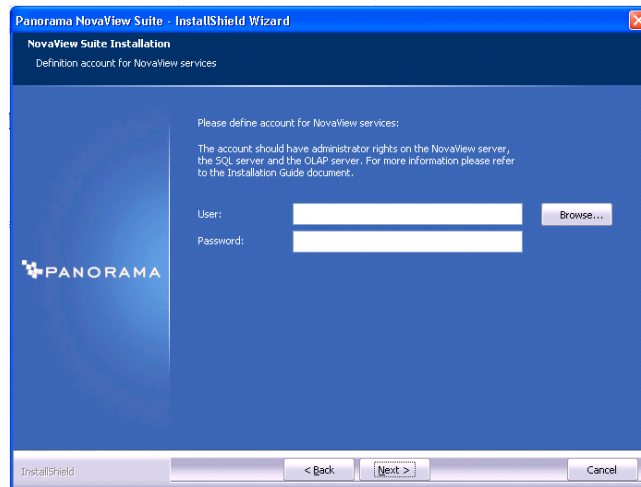
Dashboards Database
 NovaView Server , Server BI Engine, Server Database
 NovaView Web Analytics



Choose an installation location. You are given a default option of C:\Program Files\Panorama\E-BI but you may change this to fit your needs to another path on the root disk, or perhaps another disk somewhere on the system. **This option is not presented if you are upgrading.**

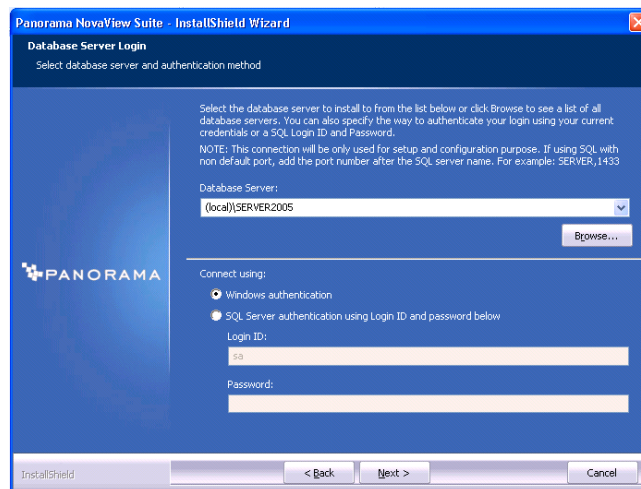


Choose the account that the NovaView service(s) will run under on the server. We require that you run the NovaView service with an account with **Administrative rights** on the NovaView server, so please enter a username in the format <Domainname>\<Username> and password.



Select a server on which to install the Panorama databases. You can either, type in a name or choose from the list of detected servers. If the Database server has a non default port please add it using the syntax “SQL_NAME,Port”

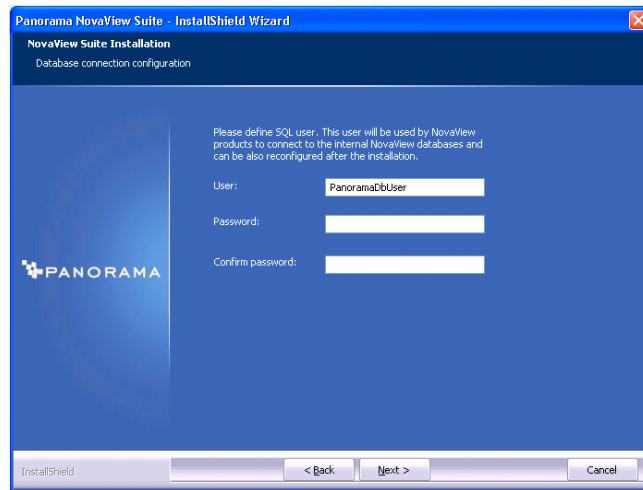
Select the way the installation will authenticate itself so it has the correct permissions to install the Panorama databases.



Create a login ID for the Panorama databases, or use an existing ID.

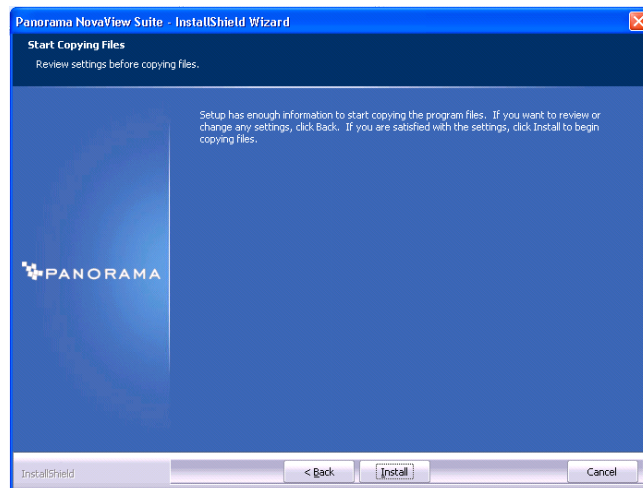
Enter the valid password and then confirm it so that the installation can use this to properly setup and configure access.

NOTE: The password must not contain the special character ‘&’ but should contain at least 10 chars one uppercase letter, a number and a special character i.e. Password_1!



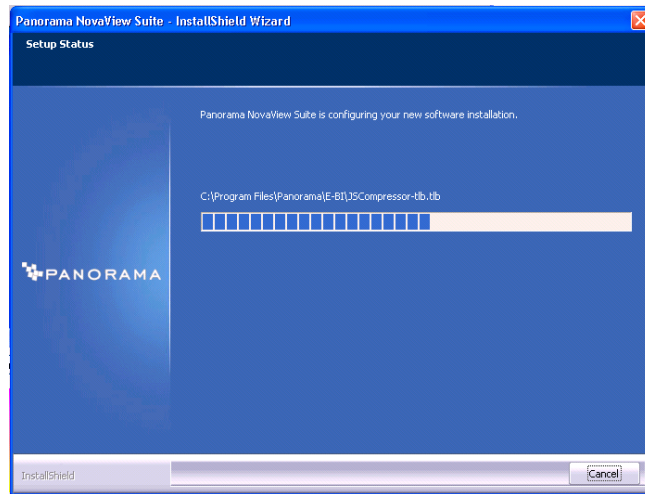
The setup now has all the information it requires to create a working NovaView Suite on the machine at this point.

Press **Install** to complete the installation.

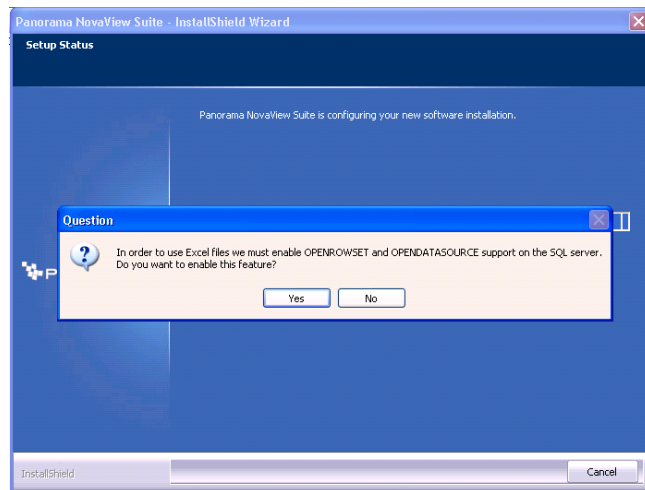


The installation can now progress unattended for a few minutes until it has installed all the files, configured the databases and registered any components it needs.

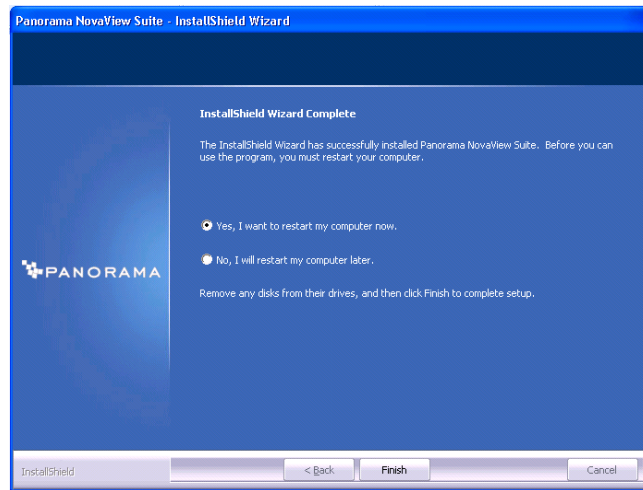
NOTE: It is common to encounter an error at the end of the installation which reads 'the service did not respond in a timely manner' this is a windows error and after the restart will be remedied.



To use Excel for some functionality with NovaView, you may be asked to Enable OPENROWSET and OPENDATASOURCE support on the SQL server. Respond **Yes** to allow the installation to modify the settings.



To finalize the installation you will now be asked to restart the server for Windows to access and update files which are currently in use. NovaView will not be fully functional until you restart, but you may restart at a later point so you can schedule this with your workflow.



Chapter 3. Panorama NovaView 6 Post-Installation

This chapter describes the NovaView 6 post installation checks.

For the post installation check verify that you have the following setup:

Website

- Panorama (Port:4444)

Virtual Directories

- Panorama
- PanoramaDashboard
- UDC

Services

- NovaView Administration Service
- NovaView Cube Service (Not installed if you do not have UDC)
- NovaView Intelligence Service
- Make sure you can access the Web Service at:
<http://<servername>/udc/webservice.asmx>

Databases

- Panorama
- PanoramaAdminDB
- PanoramaCubeGeneratorDB (Not installed if you do not have UDC)
- PanoramaCubeGeneratorIntegrationDB (Not installed if you do not have UDC)
- PanoramaDashboard (Not installed if you do not have Dashboard)

Registry Entry

- PublicBookAdmin should be added on the NovaView server for Admin and Power Users who need access to the UDC and new view creation from the Java or Flash clients the path for the registry is shown below,
ONLY USE THIS IF YOU ARE FAMILIAR WITH THE REGISTRY

- HKEY_LOCAL_MACHINE\SOFTWARE\Panorama\NovaView 6.<x>\Admin\PublicBookAdmin=<Domainname>\<Username>,<Domainname>\<Username>

PowerPivot

- To connect to PowerPivot SQL2008 R2 client Tools must be installed on the NovaView 6 server machine and then the following Registry String Value must be added to enable the connection to the valid PowerPivot server (server name only no http:// extension)
HKEY_LOCAL_MACHINE\SOFTWARE\Panorama\NovaView 6.<x>\Admin\PowerPivotServers=<PowerPivotServername>,<PowerPivotServername>

UDC (Oracle connectivity)

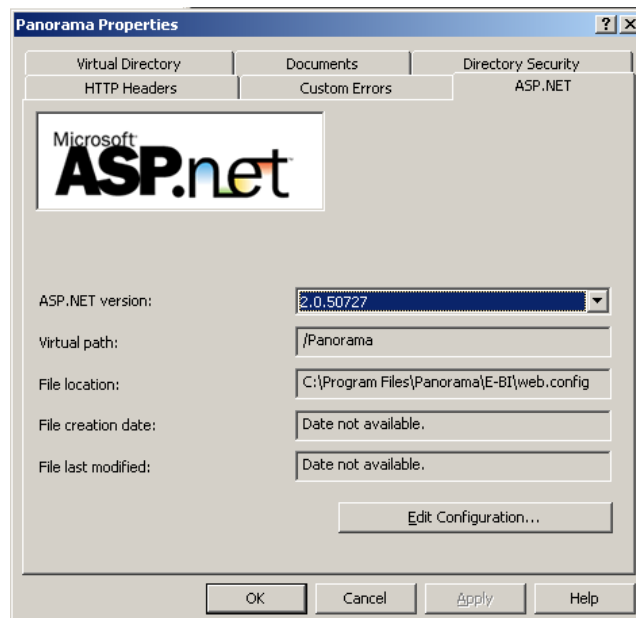
- To connect to Oracle with the UDC you must have the Oracle Provider installed on the NovaView server.

NOTE: Please make sure all three services are running if not please read below.

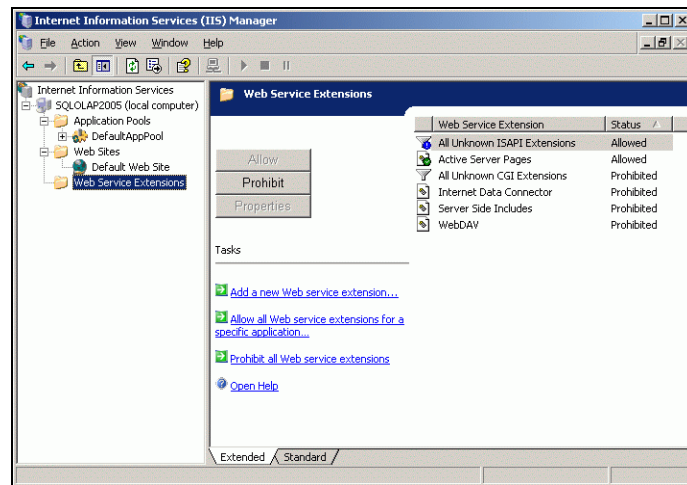
Settings Verifications

You should verify that the following settings are correct.

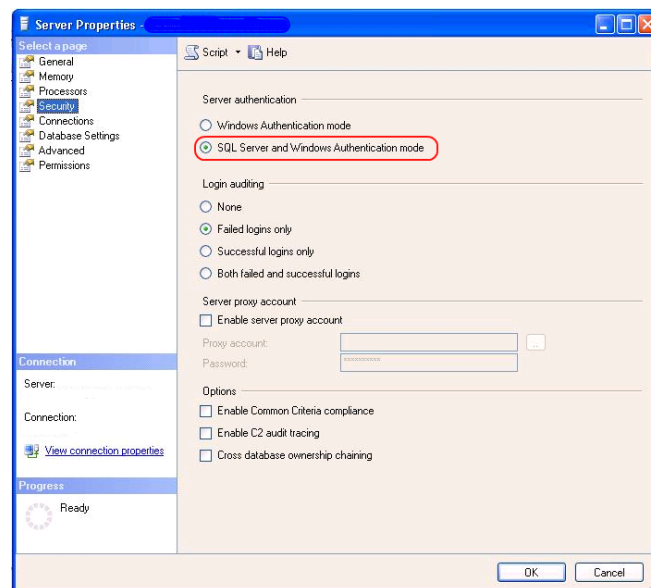
Make sure that all the new IIS Virtual Directories are set to .Net 2.0.



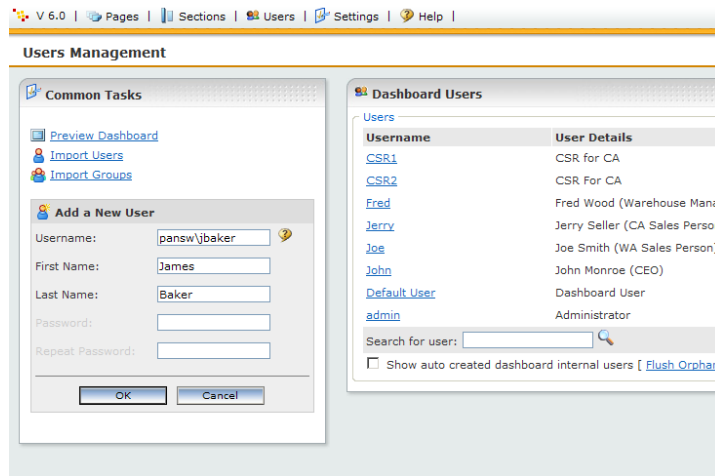
Make sure that in IIS 'All Unknown ISAPI Extensions' and 'Active Server Pages' are set to **Allowed** in Web Service Extensions.



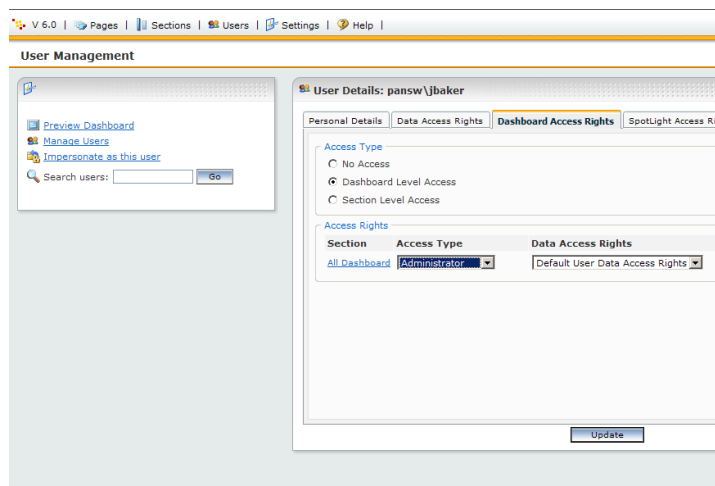
Make sure that 'SQL Server and Windows Authentication Mode' is set in SQL Server Properties.



Make sure you add the administrative user to the Dashboard Users section using the <Domainname>\<username> combination.



Once the user is added, change the user's access rights for the dashboard to **Administrator**.



Spotlight

Spotlight cannot currently be installed on a 64bit client machine, this is a known issue.

Troubleshooting

If you are using an Instance for the databases and/or the OLAP configuration then the Cube service will fail to start to solve this you will need to add the Instance to the configuration file here:

```
... \Panorama\E-BI\Cube Service\Panorama.Cube.Service.exe.config
```

In the <appSettings> section please change the parameter as described here, so change the Parameter from:

```
<add key="Instances" value="SERVERNAME\INSTANCE" />
```

To

```
<add key="Instances"
value="AS_SERVER\INSTANCE:SQL_SERVER\INSTANCE" />
```

Also change:

```
<add key="RepositoryDB" value="SERVER_NAME" />
```

To

```
<add key="RepositoryDB" value="SQL_SERVER\INSTANCE" />
```

If you are using a non default SQL Port number then please change the following lines in the configuration file here:

```
... \Panorama\E-BI\Cube Service\Panorama.Cube.Service.exe.config
```

In the <appSettings> section please change the parameter as described here, so change the Parameter from:

```
<add key="Instances" value="SERVERNAME" />
```

To

```
<add key="Instances" value="AS_SERVER: SQL_SERVER,Port" />
```

Also change:

```
<add key="RepositoryDB" value="SERVER_NAME" />
```

To

```
<add key="RepositoryDB" value="SQL_SERVER,Port" />
```

After an upgrade from NovaView 5 or 5.5

The UDC will be added to the Default application pool this should be moved to the Panorama application pool instead.

Useful KB Links for further configurations

The Administrator can now decide which JVM to use across the organization, for all aspects of the NovaView Suite, more information please follow this link to our Knowledge Base

<http://tech.panorama.com/index.php/faq/437-java-detection-mechanizm>

64bit Servers require extra configuration in order to use the UDC, please follow the Knowledge Base article here for tips:

<http://tech.panorama.com/index.php/kb/61-panorama-novaview-universal-data-connector-udc/438-using-excel-for-udc-on-64-bit>

New Dashboard Ajax mode (set by default), allows loading of components in to memory per section to speed up loading times:

<http://tech.panorama.com/index.php/kb/20-Panorama%20NoveView%20Dashboards/331-a>

Setting up the Server and Client Machines to work with NovaView Visuals in Rich mode or Design Mode

<http://tech.panorama.com/index.php/kb/35-Panorama%20NovaView%20Visuals/467-correct-setup-for-using-rich-and-design-mode-novaview-visuals>